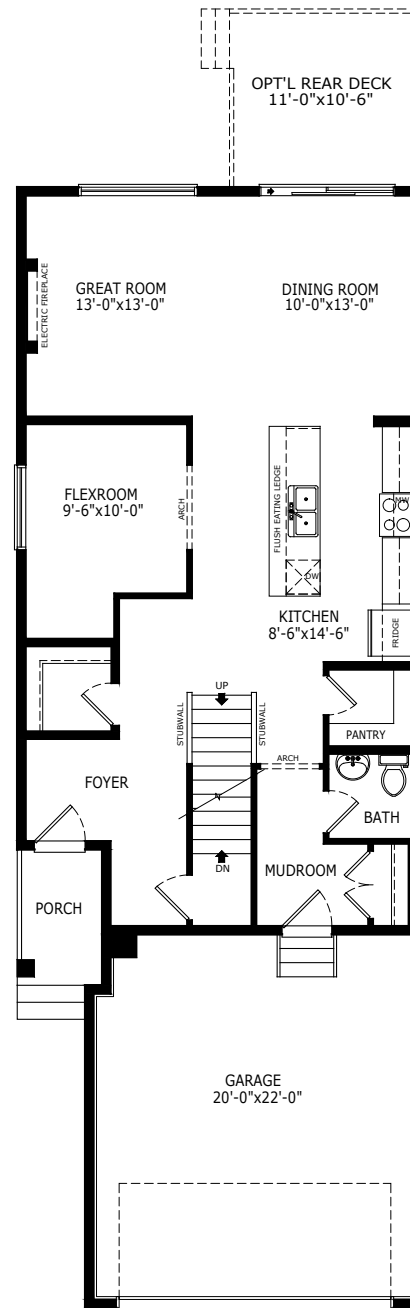
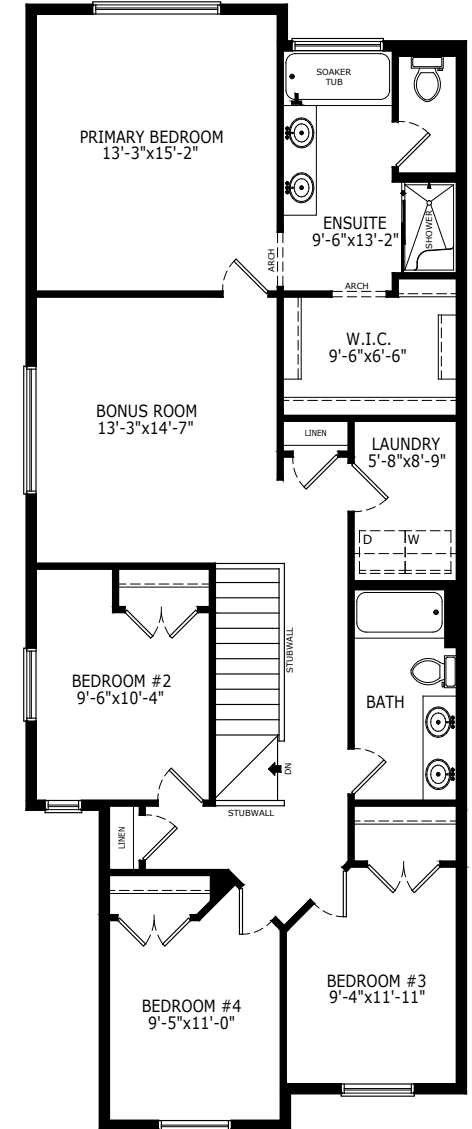


2354 SQ FT
4 BEDS
2.5 BATHS

DAMON



MAIN: 1031 SQ FT



UPPER: 1323 SQ FT

Sterling HOMES

A QUALICO Company

ELEVATIONS



CRAFTSMAN FARMHOUSE MODERN



PRAIRIE URBAN CRAFTSMAN CRAFTSMAN (FRONT BALCONY & BONUS ROOM)



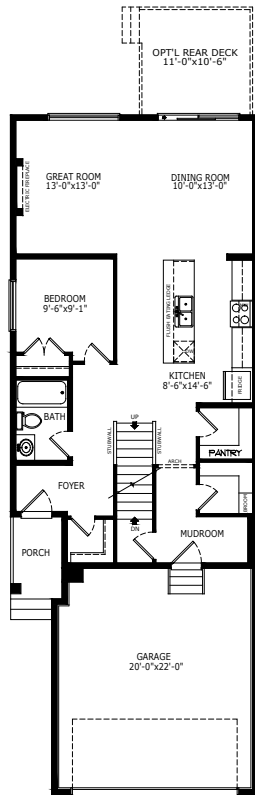
FARMHOUSE (FRONT BALCONY & BONUS ROOM) MODERN (FRONT BALCONY & BONUS ROOM)



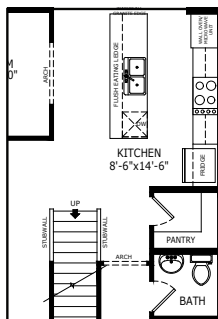
PRAIRIE (FRONT BALCONY & BONUS ROOM) URBAN CRAFTSMAN (FRONT BALCONY & BONUS ROOM)

MAIN FLOOR OPTIONS

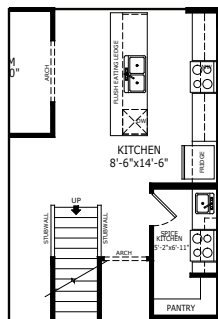
OPTIONAL MAIN FLOOR WITH BEDROOM AND FULL BATH



OPTIONAL EXECUTIVE KITCHEN

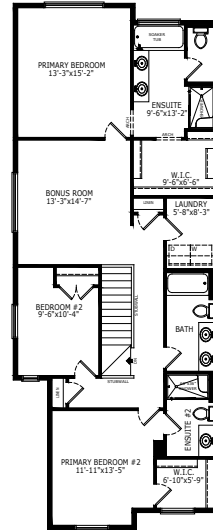


OPTIONAL SPICE KITCHEN

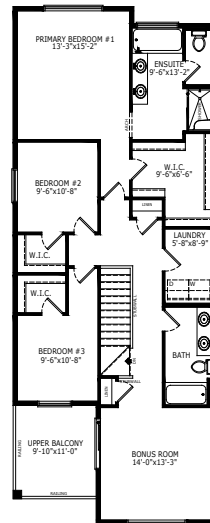


UPPER FLOOR OPTIONS

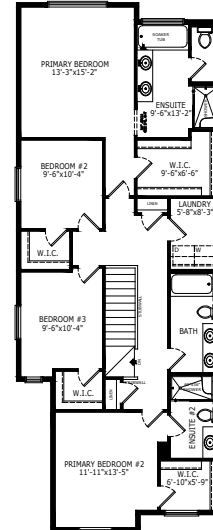
OPTIONAL UPPER FLOOR WITH 2 PRIMARY BEDROOMS #1



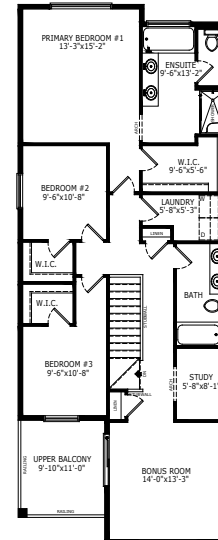
OPTIONAL BALCONY 1



OPTIONAL UPPER FLOOR WITH 2 PRIMARY BEDROOMS #2

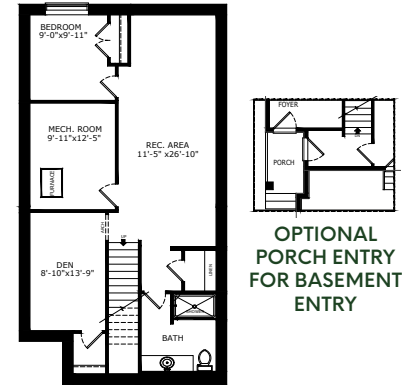


OPTIONAL BALCONY 2

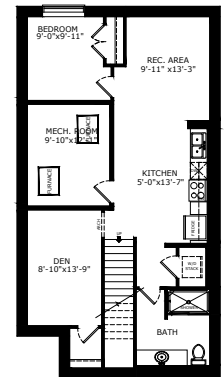


BASEMENT OPTIONS

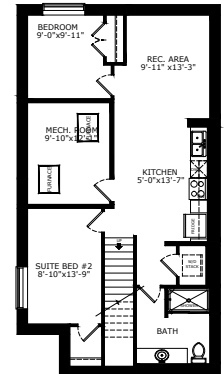
STANDARD 761 SQ FT



1 BEDROOM 'LEGAL SUITE' 766 SQ FT



2 BEDROOM 'LEGAL SUITE' 766 SQ FT



*Legal Suite availability varies by community and municipal regulations.



Scan here for floorplan options and more

Build Your Life

STERLINGCALGARY.COM